

# MONOCLONAL ANTIBODIES (MAB) TO RUBELLA



The Rubella virus consists of a single stranded RNA enclosed in an icosahedral capsid composed of multiple copies of the viral capsid protein. This protein is surrounded by a lipid bilayered envelope in which two envelope glycoproteins (E1 and E2) are embedded.

## MAB to Rubella

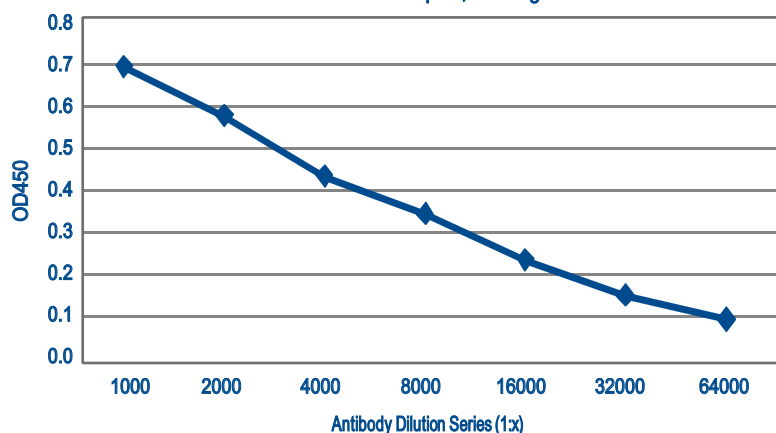
Rubella Virus, or German Measles, is a human pathogen that is transmitted via respiratory aerosols. Although in children and adults it is typically mild and self-limiting, Rubella is very dangerous for unborn fetuses. If a woman contracts rubella during pregnancy, especially during the early stages of pregnancy, it can lead to premature delivery or fetal death.

### Monoclonal Antibody to Rubella, Now in Purified Form

Purified Catalog #	Ascites Catalog #	Clone #	Description
C66496M <b>New</b>	10192	2-36	MAB to Rubella (Capsid)
C66497M <b>New</b>	10193	26-24	MAB to Rubella (E2)
C66499M <b>New</b>	10195	2-13	MAB to Rubella (E1)
C66503M <b>New</b>	10196	3-7	MAB to Rubella (E1)

### Titration curve of C66496M (clone 2-36) by indirect ELISA

MAB to Rubella Virus Capsid, Catalog #C66496M



Antigen:  
Recombinant Rubella Virus Protein, coated at 1µg/well

Antibody:  
Dilution series of C66496M, incubated 2 hours at room temp. followed by Goat anti-Mouse IgG:HRP-conjugate and TMB substrate.

Additional Rubella MABs, Polyclonal Antibodies and Antigens are available. Please inquire or visit our website.

# SPECIFICATION INFORMATION

Catalog #:	C66496M	C66497M	C66499M	C66503M
<b>Description:</b>	MAb to Rubella C Protein	MAb to Rubella (E2)	MAb to Rubella (E1)	MAb to Rubella (E1)
<b>Specificity:</b>	Specific for the Rubella Capsid protein.	Specific for the Rubella E2 protein.	Specific for the Rubella E1 protein.	Specific for the Rubella E1 protein.
<b>Clone:</b>	2-36	26-24	2-13	3-7
<b>Host Animal:</b>	Mouse	Mouse	Mouse	Mouse
<b>Isotype:</b>	IgG1, kappa	IgG <sub>1</sub> , kappa	IgG <sub>2a</sub> , kappa	IgG <sub>2a</sub>
<b>Source:</b>	Ascites	Ascites	Ascites	Ascites
<b>Format:</b>	Purified, Liquid	Purified, Liquid	Purified, Liquid	Purified, Liquid
<b>Purification:</b>	>90% pure (SDS-PAGE). Protein A chromatography	>90% pure (SDS-PAGE). Protein A chromatography	>90% pure (SDS-PAGE). Protein A chromatography	>90% pure (SDS-PAGE). Protein A chromatography
<b>Concentration:</b>	Lot specific (OD280nm, E <sup>0.1%</sup> = 1.4)	Lot specific (OD280nm, E <sup>0.1%</sup> = 1.4)	Lot specific (OD280nm, E <sup>0.1%</sup> = 1.4)	Lot specific (OD280nm, E <sup>0.1%</sup> = 1.4)
<b>Buffer:</b>	PBS, pH 7.4 ± 0.2	PBS, pH 7.4 ± 0.2	PBS, pH 7.4 ± 0.2	PBS, pH 7.4 ± 0.2
<b>Preservative:</b>	0.05% Sodium Azide	0.05% Sodium Azide	0.05% Sodium Azide	0.05% Sodium Azide
<b>Applications:</b>	ELISA, IFA, Western blot	ELISA, Western blot	ELISA, Western blot	ELISA, Western blot
<b>HI Activity:</b>	None	None	High	Low
<b>Neutralization of Infectivity</b>	None	Low Level	None	Neutralizes
<b>Storage:</b>	Upon receipt, store at -40°C	Upon receipt, store at -40°C	Upon receipt, store at -40°C	Upon receipt, store at -40°C

**Warning:** This product contains sodium azide, which has been classified as Xn (Harmful), in European Directive 67/548/EEC in the concentration range of 0.1-1.0%. When disposing of this reagent through lead or copper plumbing, flush with copious volumes of water to prevent azide build-up in drains.

**For Research or Further Manufacturing Use Only.  
Not for Use in Diagnostic Procedures.**

ME-RUB 05/25/10

For more information contact:  
60 Industrial Park Road • Saco, ME USA 04072  
888.530.0140 • 207.283.6500  
Fax: 207.283.4800  
E-mail: [info@meridianlifescience.com](mailto:info@meridianlifescience.com)

ISO 9001:2008 Certified and EC1774/2002 Approved Facility.

[WWW.MERIDIANLIFESCIENCE.COM](http://WWW.MERIDIANLIFESCIENCE.COM)

 **Meridian**  
Life Science, Inc.  
Innovative Solutions. Trusted Partner.®